

RESTA[®] 2.2 Help Index

Welcome to Resta! A windows program that will give your screen a "rest!"

To view Help on one of the topics listed below, point to an underlined topic and click the mouse button, or press TAB until the topic is highlighted and then press ENTER.

[What is Resta??](#)

[What is a Screen Saver??](#)

[Files you should have](#)

[Commands](#)

[How to...](#)

[Running Resta with Non-Windows applications \(386 enhanced mode only\)](#)

[Known bugs](#)

[Disclaimer](#)

[Copying Info](#)

[Revision history](#)

[Future Enhancements](#)

[About the Author](#)

[Programs and books used to write this program](#)

[Trademarks](#)

What is Resta??

Resta is a screen saver for windows. It has many powerful and useful features:

- 1) Resta is free...
- 2) Resta allows you to "rest" your screen whenever you want to - just by moving the mouse to a corner specified by you.
- 3) Resta allows you not to "rest" your screen - just by moving the mouse to a corner specified by you.
- 4) Resta allows you to choose the number of icons or rectangles displayed on the screen.
- 5) Resta allows you to choose the icon/rectangle/line repetition rate.
- 6) Resta allows you to choose an external icon (*.ico) to use as a saver.
- 7) Resta allows you to choose between icon, rectangle, and line saver types.
- 8) Resta allows you to choose whether to wake on mouse movement, key presses, or mouse button presses. You can have all of these waking options, or just one or two.
- 9) Resta has encrypted password protection so you need a password to re-enter the system after it has "rested".
- 10) Resta has optional case insensitive password protection.
- 11) Resta allows you to choose if you want the screen blanked when running a Non Windows application.
- 12) Resta allows you to "hide" its icon.
- 13) Resta allows you to save the configuration in the WIN.INI file.
- 14) Resta has context-sensitive on-line help.

What is a Screen Saver??

A screen saver stops image burn-in on a monitor. Image burn in is what happens when you leave your screen on, displaying the same image for a long time - eventually the image becomes burnt into the phosphor of the screen.

Resta stops this by blanking the screen and moving images around the screen so they do not remain in the same position for any long period of time.

Resta allows you to change the length of time it waits before it rests the screen while the keyboard or mouse are inactive.

Another important feature of screen savers is to stop your work being seen by other people. Resta has encrypted password protection so you need a password to re-enter the system after it has "rested". The password is also able to be case insensitive, so that you just remember the password, and not the case of it.

Files you should have:

You need Microsoft Windows version 3.0 or later to use Resta.
These files should have come with your copy of Resta (the files with "_" in their names are compressed, and MUST be uncompressed using the install program):

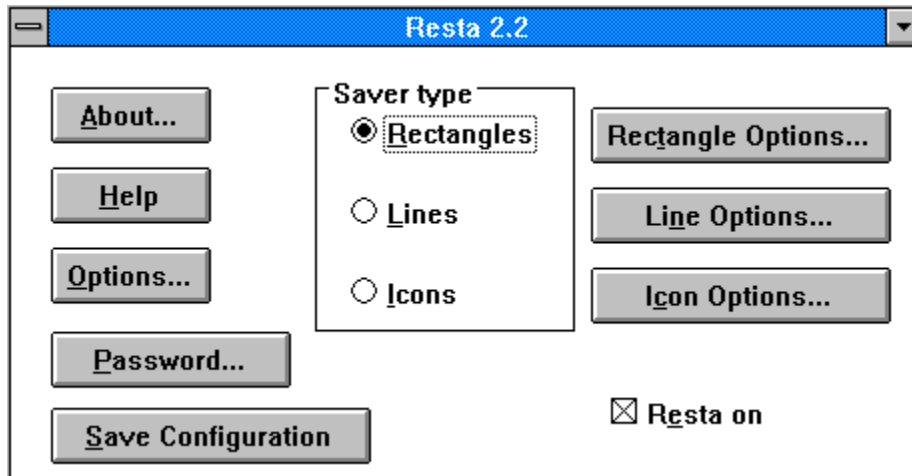
| Name: | Description: |
|--------------|--|
| BUGS.IC_ | A demonstration icon file. (16 colours) |
| BUGS2.IC_ | A demonstration icon file. (2 colours) |
| INSTALL.BU_ | Form to fill out and send to the <u>author</u> if you find a bug in Quick Install. |
| INSTALL.EXE | Run to install Resta |
| INSTALL.INF | Information required by INSTALL.EXE |
| INSTALL.TXT | Information on the install program (INSTALL.EXE) |
| LZEXPAND.DLL | De-compression library used by Quick Install |
| README.TXT | Last minute information not included in the manual. |
| RESTA.BU_ | Form to fill out and send to the <u>author</u> if you find a bug in Resta. |
| RESTA.EX_ | The file you run to use Resta. |
| RESTA.HL_ | The documentation in Windows help format - you need the Windows 3.1 help viewer to access. |
| RESTA.WR_ | The documentation in Windows Write format - use Windows Write to access. |

These files should be in the directory where you install Resta:

| Name: | Description: |
|-------------|--|
| BUGS.ICO | A demonstration icon file. (16 colours) |
| BUGS2.ICO | A demonstration icon file. (2 colours) |
| INSTALL.BUG | Form to fill out and send to the <u>author</u> if you find a bug in Quick Install. |
| INSTALL.TXT | Information on the install program (INSTALL.EXE) |
| README.TXT | Last minute information not included in the manual. |
| RESTA.BUG | Form to fill out and send to the <u>author</u> if you find a bug. |
| RESTA.EXE | The file you run to use Resta. |
| RESTA.HLP | The documentation in Windows help format - you need the Windows 3.1 help viewer to access. |
| RESTA.WRI | The documentation in Windows Write format - use Windows Write to access. |

Commands:

To view Help on one of the options in the dialog box, point to an option in the dialog box and click the mouse button, or press TAB until the topic is highlighted and then press ENTER.

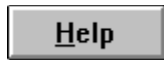


About Resta... :



This option brings up a dialog box telling you the version number, the author's name, and how you can contact him. It also tells you the windows version required to run Resta.

Help:



This option will load the documentation in Windows help format - it can only be read on-line. For help on using Windows help select the Using Help from the Help menu of the Help program.

If you do not have the Windows 3.1 help viewer, you will be unable to view the Help format documentation. Please read RESTA.WRI for how to use Resta.

Options... :

To view Help on one of the options in the dialog box, point to an option in the dialog box and click the mouse button, or press TAB until the topic is highlighted and then press ENTER.

Resta Options

Delay time: min(s) second(s)

Rest Now Corner

Rest Never Corner

Wake on:

- Mouse Movement
- Mouse Button Presses
- Key presses

Misc. Options

- Rest Dos application
- Visible when minimized

Delay time (in minutes & seconds):

There are two delay boxes, one for minutes, and the other for seconds. The first is the time in minutes it takes before the screen is saved. The second is the time in seconds (on top of the minutes) it takes before the screen is saved. You can choose to have the delay time from 1 to 99 minutes, and 0 to 59 seconds.

The default for the delay time is 5 minutes 0 seconds.

Rest now & Rest never corners:

The rest never and rest now parts of the Options dialog box show you visually in what corner you can put your mouse cursor to rest the screen. The screen will start resting 5 seconds after you have moved the mouse into the specified corner, or in the case of rest never it won't rest the screen at all.

In the rest now group box there are 4 buttons. You click on the corner you would like to move the mouse to, in order to rest the screen. If that corner is already selected as a rest never corner, the button will just click, and will not be selected. Otherwise, if not in use by a rest never corner, after being clicked, a capital S will be displayed in the button, to show that it is selected as the rest now corner.

The default for the Rest now corner is the top left corner.

In the rest never group box, there are 4 buttons. You click on the corner you would like to move mouse to, in order not rest the screen, for as long as your mouse is there. If that corner is already selected as a rest now corner, the button will just click, and will not be selected. Otherwise, if not in use by a rest now corner, after being clicked, a capital S will be displayed in the button, to show that it is selected as the rest never corner.

The default for the Rest never corner is the top right corner.

NOTE: The rest never & rest now corners will only work with a mouse.

Wake on options:

There are three wake on options: Mouse movement, Mouse button, and Key press. Each option, when checked means it is on, indicating that when resting, that option will wake Resta up.

Mouse Movement will wake Resta if the mouse is moved while resting.

Mouse Button Presses will wake Resta if the mouse button is pressed while resting.

Key Presses will wake Resta if a key is pressed while resting.
The default is to have all options on.

Rest Dos Applications:

This option, when checked, will tell Resta not to rest the screen if you are working in a Non-Windows application. See [Running Resta with Non-Windows applications \(386 enhanced mode only\)](#) for more information on running with this option off.

The default is off

NOTE: The above option will only be available if you are running in 386 enhanced mode. Please see your windows manual for more information on 386 enhanced mode and whether you can use it.

Visible when Minimized:

This option, if checked, will display an icon when Resta is minimized. If it is not checked, then Resta won't display an icon, and will be hidden. To return to the Resta dialog box if it is hidden, you need to run the program again.

The default is on.

Cancel:

This option will discard any changes you have made in the dialog box and return to the main Resta dialog box.


OK:

This will put any changes you have made in the dialog box into effect.

NOTE: Changing the options this way will not save them for next time you run Resta. To save the options for next time you run Resta, click on the Save Configuration button. This will add a [Resta] section to the WIN.INI file.

Password...

To view Help on one of the options in the dialog box, point to an option in the dialog box and click the mouse button, or press TAB until the topic is highlighted and then press ENTER.



The image shows a dialog box titled "Password Options" with a blue header bar. Inside the dialog, there is a text input field labeled "Choose a password:" containing seven asterisks. Below the input field are two checked checkboxes: "Password Enabled" and "Case Sensitive Password". At the bottom of the dialog are two buttons: "OK" and "Cancel".

NOTE: While you are in this dialog box, the screen will not be rested, due to the encryption of the password being mucked up. If you would like to have your screen rested, and you know you will be away from your computer for a while, please press OK or Cancel, so your screen can be rested.

The password to be used to return to the system after it has been rested:

This box lets you enter the password you would like to use to stop other people looking at your data while you are away from your system. As you enter the password, instead of the text you typed, stars will appear, so people near your computer will not be able to see what your password is, so they won't have be able to access the data you are working on while you are away from your computer.

The default is no password.

NOTE: If you have the password set at nothing, the password status will always be off.

The password status:

The password enabled box tells you if password protection is on or off. If the box is checked you will need to enter the password you have entered to return to windows. If it is off, you will not require the password.

The default is password not enabled (off).

Case sensitive password:

The case sensitive password check box tells you if you need to enter the correct case of the password to return to windows. If it is on, you must enter the correct case. If it is off it doesn't matter what case you use. E.G: If your password is "Windows", and case sensitive password was on, you would have to enter "Windows" when Resta asks for the password to return to windows. If it was off, you could enter "wINdoWs", and still return to windows.

With this option, off you only have to remember your password and not the case of it.

The default is case sensitive password on.

Check your old password:

To view Help on one of the options in the dialog box, point to an option in the dialog box and click the mouse button, or press TAB until the topic is highlighted and then press ENTER.



Check your password:

Please enter the previous password you had chosen:

OK:

This option checks the password you have entered in the Check Previous Password dialog box against your old password. If the two passwords are the same then you will be let back to the Resta dialog box. Otherwise you will be given a warning message and then returned to the Password Options dialog box.

Enter the old password:

This is where you enter the password you had chosen prior to changing some of the options in the Password Options dialog box.

Save Configuration :

Save Configuration

This option will save the options (from all dialog boxes) to the WIN.INI file - this saves having to manually edit the WIN.INI file.

Here are all the options Resta uses. The text in italics are the suitable values for the fields. Do not type the text in italics into the WIN.INI! Anything greater or less than the suitable values will be ignored. You can change these manually if you would like:

[Resta]

Delay (min)= *This can be from 1 to 99. This is the delay in minutes before resting the screen.*

Delay (sec)= *This can be from 0 to 59. This is the delay in seconds before resting the screen.*

Icon Repetition Rate= *This can be from 1 to 3000. This number is the number of milliseconds to wait before drawing another icon on the screen*

Number of Icons= *This can be from 0 (or just a blank screen) to 99. This is the greatest number of icons to be on screen at one time.*

Rectangle Repetition Rate= *This can be from 1 to 3000. This number is the number of milliseconds to wait before drawing another rectangle on the screen.*

Number of Rectangles= *This can be from 0 (or just a blank screen) to 99. This is the greatest number of icons to be on screen at one time.*

Line Repetition Rate= *This can be from 1 to 3000. This number is the number of milliseconds to wait before moving another line.*

Password Status= *0 for password protection off. 1 for password protection on.*

Password= *This is an encrypted string. **Please do not change it.** It will mean the password will not work.*

Icon= *This is the name of the icon file to be displayed if you have icon saver type selected. It is a filename.*

Path to Icon= *This is the path where the icon file selected is found: e.g: C:\windows\utils.*

Save Now Corner= *This can be between 1 and 4. This is the area of the screen where if you put your mouse it will blank your screen in 5 seconds.*

Save Never Corner= *This can be between 1 and 4. This is the area of the screen where if you put your mouse it will never blank your screen.*

Saver Type= *This can be from 1 to 3. This is the type of screen saver to be used. 1 = Rectangles, 2 = Lines, 3 = Icons.*

Saver enabled= *0 for Resta not to be enabled. 1 for Resta to be enabled.*

Wake on mouse move= *0 for Resta not to wake on mouse movements. 1 for Resta to wake on mouse movements.*

Wake on mouse button= *0 for Resta not to wake on mouse button clicks. 1 for Resta to wake on mouse button clicks.*

Wake on Key Press= *0 for Resta not to wake on key presses. 1 for Resta to wake on key presses.*

Rest Dos Application= *0 for Resta to rest when a Dos application is being used. 1 for Resta not to rest when a Dos application is being used.*

Visible if Minimized= *0 for Resta to be hidden when minimized. 1 for Resta to be an icon when minimized.*

Case Sensitive Password= *0 for the password to be case-insensitive. 1 for the password to be case sensitive.*

Resta Image Radio Buttons:

To view Help on one of the options, point to an option and click the mouse button, or press TAB until the topic is highlighted and then press ENTER.

Saver type

Rectangles

Lines

Icons

Random Rectangles:

This option displays rectangles of random sizes, in random positions, using the number of rectangles and the repetition rate you have defined in [Rectangle Options](#).

Lines:

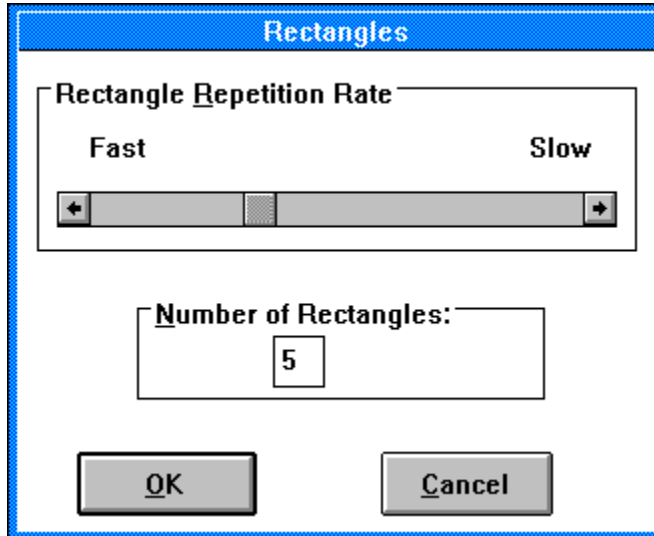
This option displays lines moving around the screen using the repetition rate you have defined in Line Options.

Icons:

This option displays icons in random positions, using an external icon (*.ico) file, the number of icons, and the icon repetition rate you have defined in Icon Options.

Rectangle Options...

To view Help on one of the options in the dialog box, point to an option in the dialog box and click the mouse button, or press TAB until the topic is highlighted and then press ENTER.



The Rectangle repetition rate:

This option uses a scroll bar to allow you to choose the time it takes before another rectangle is created. You can choose from 1 thousandth of a second to 3 seconds by moving the scroll bar, either with your mouse or using keys. See your Windows User's Guide for more information on using scroll bars.

The default is 1 second.

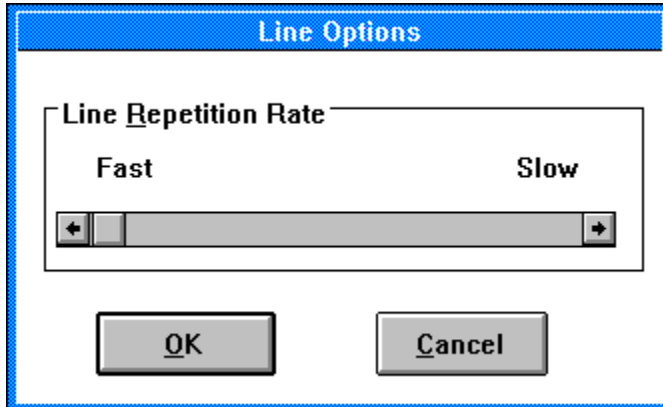
The number of rectangles:

This option allows you to choose the largest number of rectangles you would like to see on screen at one time. You can choose from 0 (just a black screen) to 99.

The default is 5.

Line Options...

To view Help on one of the options in the dialog box, point to an option in the dialog box and click the mouse button, or press TAB until the topic is highlighted and then press ENTER.



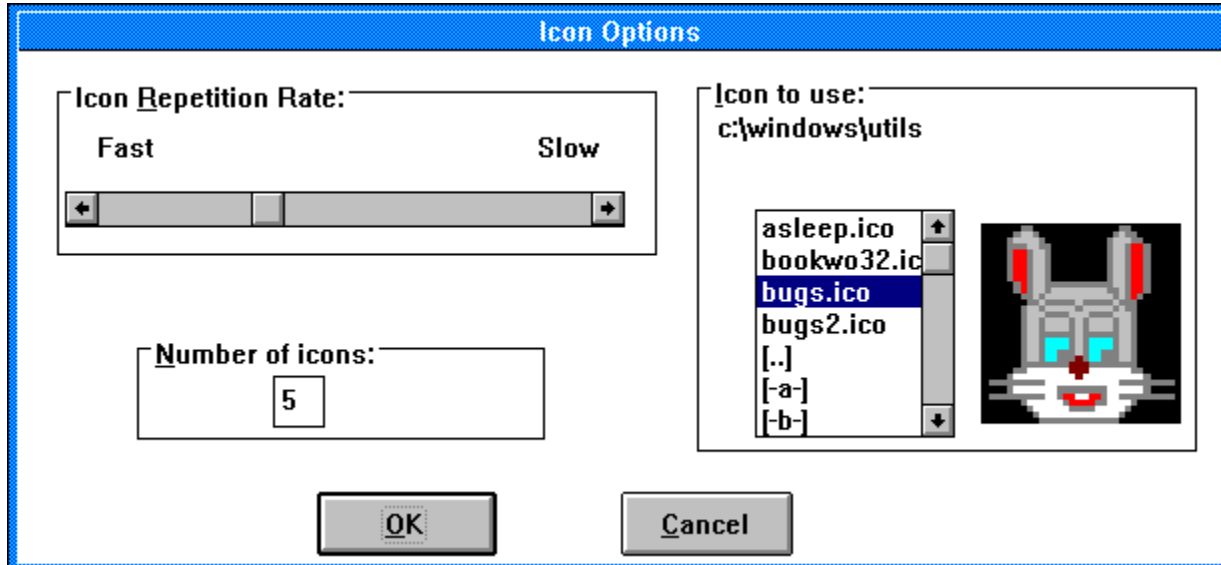
The line repetition rate:

This option uses a scroll bar to allow you to choose the time it takes before another line is moved. You can choose from 1 thousandth of a second to 1 second by moving the scroll bar, either with your mouse or using keys. See your Windows User's Guide for more information on using scroll bars.

The default is 10 thousands of a second.

Icon Options...

To view Help on one of the options in the dialog box, point to an option in the dialog box and click the mouse button, or press TAB until the topic is highlighted and then press ENTER.



The Icon repetition rate:

This option uses a scroll bar to allow you to choose the time it takes before another icon is created. You can choose from 1 thousandth of a second to 3 seconds by moving the scroll bar, either with your mouse or using keys. See your Windows User's Guide for more information on using scroll bars.

The default is 1 second.

The number of icons:

This option allows you to choose the largest number of icons you would like to see on screen at one time. You can choose from 0 (just a black screen) to 99.

The default is 5.

The external icon to be used:

This option allows you to choose the icon to be displayed if you have the Icon Resta Image Type selected. There is a list box with the directories on the drive, the drive letters, and all the *.ico (icon format) files in the directory. Double click on an icon and the icon will be displayed in the box beside the list box. The path to the icon file is displayed just above the two boxes. If you are using a Keyboard, just move around the list box by using the arrow keys, and press space to select the icon.

You can use an Icon Editor (there are many around) to create your own icons, or use the ones provided with Resta 2.2.

When you have your screen rested, provided you have the icon Resta image type selected, this icon will be displayed.

The default is no icon selected.

NOTE: Resta will not work with icon files with greater than 16 colours.

Icon Directory:

This tells you what directory you are in.

Icon:

This shows you what the icon you have chosen looks like. It is a lot bigger than it will be when you save the screen, but it does give you an idea as to whether or not you like the icon.

Resta On/Off

Resta on

This option lets you choose if Resta is to rest the screen or not. If there is a check mark in the box, Resta will rest your screen when either the delay time is reached without you pressing a key or moving the mouse, or you move the mouse into the save now corner. If the check mark is not in the box, the screen will not be rested at all, which is useful if you are going to be using a communications package, where a screen saver would slow it down. *The default is on.*

System Menu:

To view Help on one of the options, point to an option and click the mouse button, or press TAB until the topic is highlighted and then press ENTER.



The image shows a small window with a system menu. The menu is open, and the 'Restore' option is highlighted in blue. The other options are 'Move', 'Minimize', 'Close', and 'Switch To...'. The 'Close' and 'Switch To...' options have keyboard shortcuts listed next to them: 'Alt+F4' and 'Ctrl+Esc' respectively.

| | |
|----------------------|----------|
| <u>R</u> estore | |
| <u>M</u> ove | |
| <u>M</u> inimize | |
| <u>C</u> lose | Alt+F4 |
| <u>S</u> witch To... | Ctrl+Esc |

Restore:

This option will be greyed out if Resta is not Minimized. If Resta is Minimized however, the option will be available, and will make the Resta appear.

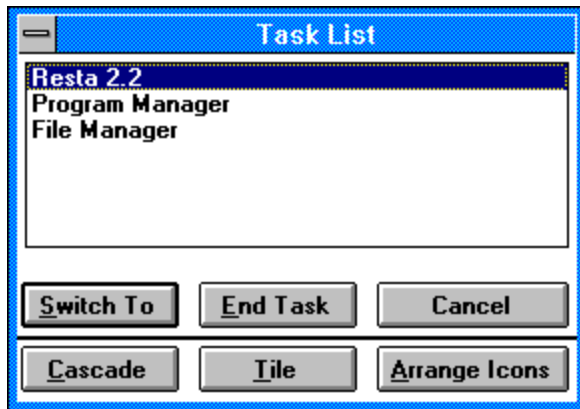
Move:

This option allows you to move the Resta icon, or the dialog box to a position on the screen you choose.

Close:

This option will close Resta. If you close it, Resta will not run, and thus, will not be able to rest the screen.

Switch To:



This option will allow you to go to other applications. It will bring up the windows task list, where you can go to other applications, cascade all open applications, tile all open application, or remove an application from the task list. See your Windows User's Guide for more information on the Task List.

Minimize button:



This button makes Resta an icon. When it is an icon it is at the bottom of the desktop. See your Windows User's Guide for more information on minimizing and icons. If you have Visible when Minimized in the Options off, you will not see a Resta icon at all. It will be hidden.



If you can't find the Resta icon you may have to minimize all your open applications.

How to:

[Set up Resta](#)

[Run Resta](#)

[Use Resta](#)

[Upgrade from version 1.0/2.0/2.1](#)

Setting up Resta :

You should have received Resta in a file called RESTA22.ZIP - and it should have the files as listed in Files you should have. To set Resta up, just run INSTALL.EXE, and it will install Resta for you.

To change Resta's settings while running Resta you can use the Options dialog box.

Select the Resta image type you would like, then go to the dialog box for that type and choose the options.

NOTE: Changing the options this way will not save them for next time you run Resta. To save the options for next time you run Resta, click on the Save Configuration button. This will add a [Resta] section to the WIN.INI file.

Running Resta:

To run Resta you have a few options:

1) Run Resta by using the Program Manager using the run option under the File menu. Type in the complete file name, including the path and choose OK.

Using the File Manager is also possible, select Resta in the correct directory & double click. These options are not useful if Resta is to be used often.

2) Run Resta by double clicking on the icon in the Program Manager that was created by the install program. Install will also have put the Resta icon in the Startup group, so Resta will run every time you load windows. If you want Resta to run minimized then click on the Run Minimized check box in File, Properties dialog box.

3) Run Resta every time Windows loads up - add this to the load line in the WIN.INI file: Drive:\xxxxxx\RESTA.EXE. If you are running Windows 3.1 or the Norton Desktop for Windows 1.0/2.0 you can drop RESTA.EXE from the file manager into the Startup group and Resta will run automatically with windows.

Drive stands for the drive that Resta is on (normally C) and xxxxxx is the directory that Resta is (normally \windows\utils\ or windows\resta\). Then of course it runs Resta! That's all there is to running it every time you load Windows! This is by far the best option, and I suggest you use Resta in this manner.

How to use Resta:

To use Resta to save your screen you have two options:

- 1) Set up the Delay time as outlined in Setting up Resta, and wait for it to rest the screen.
- 2) Set up a Rest Now corner as outlined in Options... Move the mouse to the corner you specify, and when the screen is resting you can use move the mouse, press a mouse button or hit any key to unblank the screen (depending on what Wake on setting you have in the Options dialog box) Resta will then take you back into the last application you were using.

Getting context sensitive help:

Resta provides help based upon the function you choose. Press F1 and help on the dialog box you are in will appear.

Upgrading from version 1.0/2.0/2.1

To upgrade from version 1.0 you must replace all the version 1.0 files, and then load Resta in a windows session where version 1.0 has not been run before, and version 2.2 will run perfectly.

Upgrading from 2.0 is as simple as just installing Resta and then running 2.2

To upgrade from 2.1 just install Resta, and then run Resta 2.2.

See the [Revision History](#) for information on the great new features in this version.

Running Resta with Non-Windows applications: (386 enhanced mode only)

NOTE: The following information does not apply if you have Rest Dos Application not selected in the Options dialog box.

If you are using Resta with a Non-Windows application that is running full-screen then Resta won't blank the screen after the delay time inputted - instead it takes approximately six times as long. (That length depends on the PIF settings - see your Windows manual for more info on PIF settings)

If you are running Resta with a Non-Windows application in a window then Resta will blank the screen when it should e.g: if the delay time is one minute then Resta will blank the screen after one minute.

Here's where the problem lies:

When you run a Non-Windows program Windows stops finding out when keys have been pressed - which means that executing one of these programs Windows stops being able to determine whether the mouse has been moved or if the keyboard has been pressed - however windows still keeps it's timers going (so the clock still works for example) - Resta relies on the timer to work out when to blank the screen

Since Resta can't work out if you are still using your Non-Windows application or not - and Resta is there to provide complete protection for your monitor so Resta will blank the screen even if you are using your Non-Windows application.

Known bugs:

There are no known bugs at the time of release.

Disclaimer:

Resta 2.2 is distributed free. No warranty exists, either express or implied. No liability is assumed for any damage or loss resulting from the use of this program. No claims are made regarding the accuracy of this program. The author reserves the right to charge for future versions.

Copying info:

This program may be freely used and copied but may not be sold except for a nominal copying charge not to exceed US \$10. This file should be included with all copies of Resta 2.2.

Revision history:

0.1 beta: This version came out of Pc Techniques August/September magazine. The source code to Monitor Saver was in there - I just typed it in - many thanks to Eric Anderson of Moon Valley Software for the code in the mag (Moon Valley software produce many great windows applications). I changed very little.

0.2 beta: This version was the first real version with any of my changes:
The name was changed (to Win Blank - which I thought was boring so I changed it to Sleeper)
The cursor was changed to a cursor I drew..

0.3 beta: The name was changed from Sleeper to Resta (Thanks to Mum for the name) after I found out Sleeper was the name of the screen saver with The Norton Desktop for Windows.

The menu code was rewritten - changed so all choices were made from the system menu.

A rest now option was added to the menu.

The restore, size, minimize and maximize menu options were removed from the system menu.

0.4 beta: The moving cursor was changed to moving icon(s)

An option in the Options dialog box and in the win.ini file was added to change the number of icons on the screen at one time.

Changed cursor to be transparent - so you didn't see it when the screen was rested.

0.5 beta: A bug was fixed where if you choose to switch to Resta from the task list it would come up in a window with no menu - now it just displays the icon when switching to it.

An option in the Options dialog box and in the WIN.INI file was added to choose how long to wait before drawing another icon.

Created documentation in Microsoft Write format.

0.6 beta: A bug was fixed where if you choose to switch to Resta from the task list it wouldn't display its icons correctly - it just displayed one and blanked the screen

A bug was fixed where if you had forgotten to put more paper in the printer and the screen was blanked the print manager dialog came up and Resta went to the background.

A bug was fixed where if you left the mouse in the menu bar area of a program the cursor wouldn't go away.

A problem was fixed in the Options dialog box where the edit box you had just selected still had the text highlighted.

0.7 beta: A menu option was added to save the configuration to the WIN.INI file.

Fixed a problem where if you changed the Delay time in the WIN.INI file to 0 it would never stop blanking the screen.

Fixed a potential problem where if the Delay was greater (in the WIN.INI) than 99 or the Icon Repetition Rate was greater than 5000 or the Number of icons were greater than 99 it would use that amount. Now if they are greater than those figures it will not go back to the defaults.

0.8 beta: Fixed a problem where if you looked at the About or Options dialog box and left the screen to blank - when you came back to use a Resta menu option you were not able to get into the menu.

Online, context sensitive help was added.

Fixed problems with the context-sensitive help not working when selecting the dialog

boxes or using the move or close items.

1.0: The first public release version!!

1.1 beta: Encrypted password protection was added.

Moving lines were added. The idea and source code came from a program that ran on the Windows desktop and displayed lines.

Line options and the encrypted password were added to the save configuration option.

External icon loading was added. The basis of the format came from Pc Magazine March 26, 1991.

Random rectangles were added.

Visual Rest now and Rest never options were added to the options dialog box.

1.2 beta: The system menu options were discarded, everything is now done from a dialog box window.

An option to wake on whatever desired means (mouse movement, key press, mouse button) was added.

The wake on dialog box was incorporated into the Options... dialog box.

The Load icon dialog box was incorporated into the Icon Options dialog box.

1.3 beta: 2 colour icon support was added.

Password protection was improved. The password choosing dialog box now shows the password as stars instead of normal text.

Line problems were fixed. After about 15 minutes of saving it would crash the system with a divided by 0 error. It would also just end up moving lines straight across the screen, this was fixed, but there is a little flicker every time it updates it's self.

Dialog box problems were fixed.

1.4 beta: Changed the Resta image type options, so that if you don't have the type selected you can't enter that types dialog box.

Changed the edit box in the (type) option dialog boxes to scroll bars.

Documentation in Write file format was removed.

2.0: Second public release!!

2.1: Third public release!!

Added the option to not rest if a Dos application had the focus.

Made the non selected saver types have greyed buttons.

2.2: Fourth public release!!

Fixed a problem where people could kill Resta under Windows 3.1 by using the local reboot (CTL-ALT-DEL).

Case sensitive password protection was added. Now you can have case sensitive or case insensitive password protection.

The icon display, after an attempt at getting the password failed, would be quite slow.

The thumbnail for the icon, lines and rectangle scroll bars would always go to the right if you dragged it.

Resta will now not warn you if you don't have an icon file in the WIN.INI.

Added an option to hide the Resta icon when it is minimized.

The mouse pointer is now moved after you come out of screen saving. This is so that if your mouse has gone and you have the mouse in the save now corner it doesn't keep saving the screen.

After you change the password it now asks you for the old password.

An install program was added, to make it easier to install and get Resta up and

running.

The password dialog box will disappear after about two minutes. This is to stop the problem of someone accidentally moving the mouse, and then Resta staying in password mode until someone presses OK.

Resta now has full keyboard support. You should be able to use Resta without a mouse (it is still recommended that you have a mouse though...)

The help file was changed to have bitmaps.

When the screen is rested the cursor is hidden, and then restored after resting.

Shift F1 help was removed, because the help file is now so visual there is no need for it.

Returned to using Windows Write format documentation, because some people wouldn't want to have such a large help file clogging up their drive

Future Enhancements :

User-definable hotkey to rest the screen.
User-definable bitmap patterns as savers.
A total re-write of the code, in C++.
Resta will become object orientated.
And anything else users suggest....

About the Author:

Stefan Olson is 15 years old and this is the first windows program he's written. He hopes to get a job as a programmer one day in the future (anyone looking for a young programmer??), and has many other windows programs waiting to be written. These include: a disk cataloguer (at the time of writing (September 1992) WinCat was in beta test), a windows unarchiver and archiver, a screen capture program with the ability to save the captured picture to .Bmp (anyone got any code to do this??), and an icon viewer and editor... He has written the install program that is used to install Resta.

How to contact the author:

The author can be contacted through the Internet at (don't type the brackets):
(stefan@olson.acme.gen.nz)

The author can be contacted through compuserve at (don't type the brackets):
(>Internet:stefan@olson.acme.gen.nz)

I'd appreciate it if you'd send me a mail message if you have any comments or suggestions...

If you find a bug please send me a mail message with a filled in bug report

Programs and books used to write this program:

Resta was written in C using Borland Turbo C++ for Windows 3.1.

Resta was debugged using Borland Turbo Debugger for Windows 3.1

Resta's icons and dialogs were created using Borland Resource Workshop 1.02(comes with Turbo C++ for Windows)

Resta's documentation was written in Lotus Ami Pro for Windows release 2.0 and then saved to RTF (help file) format, before the RTF file being compiled using the Microsoft Help Compiler 3.10.

I used the Microsoft Programmers Reference and the Turbo C++ for Windows on-line help to find the correct commands.

I used Charles Petzold's "Programming Windows" (Microsoft Press, 1990) to learn windows programming.

I used Programming Techniques Aug/Sept 1990 - for the basic idea of how to write the screen saver.

I used Pc Magazine March 26, 1991 for the basis of the icon format.

Trademarks:

The Norton Desktop for Windows is a trademark of Symantec Corporation.

Turbo C++ for Windows, Turbo Debugger for Windows and the Resource Workshop are trademarks of Borland International.

Ami Pro is a trademark of Lotus Development Corporation.

Windows, Write and the Help compiler are trademarks of Microsoft Corporation.

